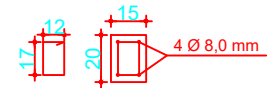


VIGA DE COROAMENTO



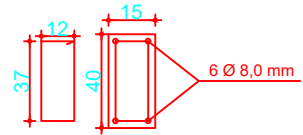
Estribo 5,0 mm C/ 20 cm  
 $36,0 \text{ m} / 0,20 \text{ m} = 180$  Estribos de 65 cm cada  
 $180 * 0,65 = 117,0 \text{ m } \varnothing 5 \text{ mm}$  (estribos) nas vigas

OBS.: VIGA DE COROAMENTO = VIGA INTERMEDIÁRIA

VIGA INTERMEDIÁRIA

8 Barras de 9,60 m  
 8 Barras de 10,20 m  
 $(9,60 * 8) + (10,20 * 8) = 76,80 + 81,60 = 159,0 \text{ m } \varnothing 8 \text{ mm}$   
 \* 2

VIGA DE DUNDAÇÃO



Estribo 5,0 mm C/ 20 cm  
 $36,0 \text{ m} / 0,20 \text{ m} = 180$  Estribos de 1,05 cm cada  
 $180 * 1,05 \text{ m} = 189,0 \text{ m } \varnothing 5 \text{ mm}$   
 8 Barras de 9,60 m  
 8 Barras de 10,20 m  
 $(9,60 * 8) + (10,20 * 8) = 159,0 \text{ m } \varnothing 8 \text{ mm}$

SOMATÓRIO DE PERÍMETRO			
PILARES		VIGAS	
Ø 5,0 mm	220,0 m	Ø 5,0 mm	423,0 m
Ø 8,0 mm	269,0 m	Ø 8,0 mm	477,0 m
PESO POR METRO			
Ø 5,0 mm	0,154 kg	+ 10 % =	0,169 kg
Ø 8,0 mm	0,395 kg	+ 10 % =	0,435 kg
(5mm) 643,0 m x	0,169 kg	108,67 kg	
(8mm) 746,0 m x	0,435 kg	324,51 kg	
SOMATÓRIO TOTAL		433,18 kg	